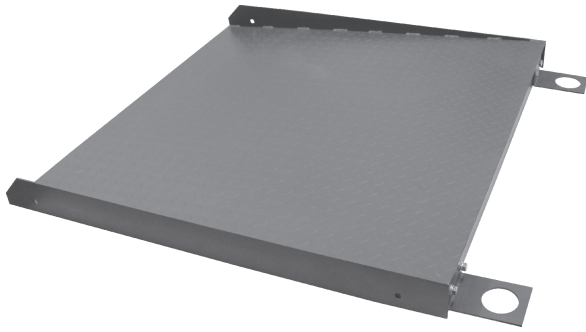


秤台斜坡

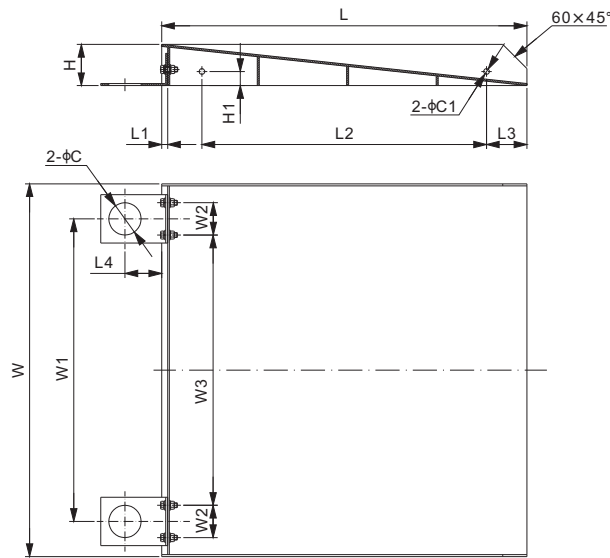


特点:

- 合金钢结构
- 斜纹防滑台面
- 表面喷塑处理
- 含可拆卸的安装底座及连接的螺栓、螺帽

秤台斜坡套件包含:

- 1 个秤台斜坡
- 2 个秤台安装底座
- 4 套 M10X30mm 螺栓和螺帽



尺寸

| 量程 | C | C1 | H | H1 | L | L1 | L2 | L3 | L4 | W | W1 | W2 | W3 | 毛重(kg) |
|---------------------|------|------|------|------|-------|------|-------|------|------|-------|-------|------|-------|--------|
| inches | | | | | | | | | | | | | | |
| RAMP3×3-17 | 3.15 | 0.55 | 4.02 | 1.37 | 35.67 | 0.59 | 27.80 | 3.93 | 3.62 | 36.38 | 29.53 | 3.15 | 26.38 | 50.9 |
| RAMP3×4-17 | 3.15 | 0.55 | 4.02 | 1.37 | 47.76 | 0.59 | 39.37 | 4.13 | 3.62 | 36.38 | 29.53 | 3.15 | 26.38 | - |
| RAMP4×3-17 | 3.15 | 0.55 | 4.02 | 1.37 | 35.67 | 0.59 | 27.80 | 3.93 | 3.62 | 48.39 | 41.50 | 3.15 | 38.35 | 61 |
| RAMP4×4-17 | 3.15 | 0.55 | 4.02 | 1.37 | 47.76 | 0.59 | 39.37 | 4.13 | 3.62 | 48.39 | 41.50 | 3.15 | 38.35 | 81 |
| RAMP5×3-17 | 3.15 | 0.55 | 4.02 | 1.37 | 35.67 | 0.59 | 27.80 | 3.93 | 3.62 | 59.45 | 52.56 | 3.15 | 49.41 | - |
| RAMP5×4-17 | 3.15 | 0.55 | 4.02 | 1.37 | 47.76 | 0.59 | 39.37 | 4.13 | 3.62 | 59.45 | 51.18 | 3.15 | 48.03 | 103 |
| mm (由上述尺寸转换) | | | | | | | | | | | | | | |
| RAMP3×3-17 | 80 | 14 | 102 | 35 | 906 | 15 | 706 | 100 | 92 | 924 | 750 | 80 | 670 | 50.9 |
| RAMP3×4-17 | 80 | 14 | 102 | 35 | 1213 | 15 | 1000 | 105 | 92 | 924 | 750 | 80 | 670 | - |
| RAMP4×3-17 | 80 | 14 | 102 | 35 | 906 | 15 | 706 | 100 | 92 | 1229 | 1054 | 80 | 974 | 61 |
| RAMP4×4-17 | 80 | 14 | 102 | 35 | 1213 | 15 | 1000 | 105 | 92 | 1229 | 1054 | 80 | 974 | 81 |
| RAMP5×3-17 | 80 | 14 | 102 | 35 | 906 | 15 | 706 | 100 | 92 | 1510 | 1335 | 80 | 1255 | - |
| RAMP5×4-17 | 80 | 14 | 102 | 35 | 1213 | 15 | 1000 | 105 | 92 | 1510 | 1300 | 80 | 1220 | 103 |